

Echo Ibiza
Indoor • Outdoor Fabric Collection



Lee Jofa
Oscar de la Renta Home



Kravet

Lee Jofa



Brunschwig & Fils
Durance Collection

Brunschwig & Fils

GP & J Baker

CARY'S VIEW



Summer is a season of simple pleasures: barbecues and baseball games, long, sunny days and casual evenings at home spending time with family and friends. Summer also marks the halfway-point of the year, when we look back on all that's been accomplished so far and look forward to what the coming months have in store.

Here at Kravet, summer is a time to take stock and a deep breath before we gear up for an exciting and busy second half of the year. We hope, like us, you'll find inspiration in these pages, where we celebrate the best of summer and find sources of creativity and optimism everywhere—in art and travel and in reconnecting with nature. We also showcase new collections inspired by warm, exotic locales and explore tranquil outdoor spaces designed for relaxed, easy living.

However you choose to spend the rest of your summer, make the most of it. Fall is just around the corner, so savor every blissful, sun-drenched moment! And as always, please enjoy this issue of inspired.news.



One Piece Three Options | p. 11

The Latest from Lee Jofa | p. 14

Ralph Lauren Home | p. 21

Custom Inspiration | p. 6



Abstracts with Attitude | p. 10



EDITORS AND CONTRIBUTORS

Our Summer Guilty Pleasures



Alana Moskowitz, Managing Editor, Kravet Inc.
"Lobster Rolls on Lobster Rolls"

Christina Frasca, Contributing Editor, Kravet Inc.
"Boating on the Bay with a Glass of Rosé"

Andrea Munera-Guerra, Graphic Designer, Kravet Inc.
"Walking on the Boardwalk to the Ice Cream Parlor"

Kieran Doherty, Copywriter, kieranedoherty.com
"Buying a Day Pass for the Fancy Hotel Pool in my Neighborhood"



STYLE BY THE SEASHORE

Mabley Handler’s Furniture Collection Takes Chic Coastal Living to the Next Level



Mabley Handler Interior Design brings their signature Hamptons’ style to Kravet Furniture with a collection of 35 sophisticated designs that embody the relaxed, beach-chic style for which Jennifer Mabley and Austin Handler are known. Each piece in the collection has the opportunity to become unique with a wide array of fabric and finishes for endless customization options.

Read on for the husband-and-wife design team’s take on the new collection, future aspirations and why they’re (almost) always in sync:

In what ways does the new collection reflect your East End inspired aesthetic?

The essence of our collection is the combination of driftwood-style cerused oak wood finishes, soft metal details and grasscloth elements, all details we use throughout our Hamptons projects. The clean, comfortable lines of the furniture represent the current style of Hamptons design, which utilizes a more contemporary look.

What influences did you draw on for the collection?

A lot of our inspiration comes from nature, colors evocative of the sky, sand and sea, natural linens and driftwood tones in wood. We also incorporated historic design elements, such as Chippendale-patterned chair backs and X-base stools, but in driftwood-toned wood.


As a couple, do you share a similar aesthetic or does your design approach come from a blend of both your styles?
We’re fortunate that we share a similar aesthetic. Give us a hundred sofas or a pile of fabrics and we’ll pick the same one—we definitely finish each other’s sentences, design-wise!

What would be your dream project?
Well, it was a dream of ours to move from New York City and live in the Hamptons full time, raise a family and run a business—and eventually design a Hamptons-inspired furniture line with Kravet, so... our next dream project would have to be designing a luxury resort in the Caribbean! That sounds pretty amazing to us!

For more about Mabley Handler Interior Design, visit mableyhandler.com. Visit kravet.com for more information about the Mabley Handler Kravet Furniture collection. Shop the designer room at curatedkravet.com.



Featuring the Howell Canopy Bed from the Mabley Handler Furniture Collection



Discover The Scandia Down Difference

HEIRLOOM QUALITY DOWN COMFORTERS & PILLOWS EUROPEAN BED & BATH LINENS

scandiahome.com

800-438-2431



Featuring the Privet Lane Cocktail Table from the Mabley Handler Furniture Collection

ECHO IBIZA

Bringing Outdoor Fabrics in With Echo's Meg Roberts

After almost 95 years in fashion accessories and 25 years in home decor, Echo's passion for vibrant, timeless design is still going strong. With Ibiza, their newest fabric collection for Kravet, Echo transforms performance qualities into fresh, colorful patterns for both indoor and outdoor use. Inspired by the celebrated Spanish island's rustic charm and natural beauty, the new collection is an exploration of modern, global versatility. Colorful ikats, suzanis and paisleys layer beautifully with refined geos and stripes for an easy balance between bold statements and small-scale weaves.

When describing how the idea came about for the new collection, Echo's Home Design Director Meg Roberts points to a growing trend of people adopting a more casual lifestyle, where the lines between indoor and outdoor living are blurred. Performance fabrics allow for maximum enjoyment of these relaxed, inviting spaces, free of worry, whether indoors or out.

The Echo Ibiza fabric collection is available in Kravet showrooms. For more information, visit kravet.com. Shop *Resort Living at Home* at curatedkravet.com.



Left Top Image Cushion: 34542-50; Pillows (left to right): 34547-5, 34546-12, 34542-15. Left Bottom Image Cushion and Pillows: 34546-12.

GET INSPIRED WITH

MEG ROBERTS

We asked Meg, who just finished overhauling her sunroom using fabrics from the new collection, to share a few thoughts on her design approach and how she keeps things fresh and innovative at Echo, while meeting the evolving expectations of today's consumer:



My design philosophy is simple. What I value most, is integrity of design. Taste is personal, but quality and integrity of design transcends all styles, trends, and price points.

I'm inspired by color and art and architecture, of course, but I'm also inspired by random things I see around me—patterns in nature, the play of light and shadows, the repeating geometry of everything from manhole covers and grates, to tiles and industrial materials. There is never a shortage of inspiration!

In order to stay relevant, we must always be plugged in to the passions of our consumers and today people are really looking to create experiences. I know I dream of being on vacation, eating great food, dining outdoors, lounging in the sun reading a book. I can imagine those long days with the easy flow into night, the casual comfort of seamlessly moving indoors and out—and a big part of that comes from having indoor living spaces move outdoors and allowing the relaxed quality of outdoor living to move indoors. That's the spirit that inspired this latest collection of fabrics.

In addition to the durability, water and stain resistant qualities of performance fabrics, what I find appealing is that I don't have to sacrifice comfort—our fabrics feel great—and I don't have to worry about fading. My house is very sunny and these performance fabrics offer me completely stress-free living! When I hang out on my newly decorated sunporch, I feel like I am on vacation! Well, almost.

LUXURY TEXTURES

Kravet Couture’s Lush New Fabric Collection Offers More Than Surface Appeal

Kravet Couture presents Luxury Textures, a collection of sumptuous, highly tactile fabrics that can be used for a variety of upholstery applications. Comprised of plush chenilles, lustrous cut velvets, natural linens and sculptural weaves made from innovative, chunky yarns, the collection provides a unique range of sensory options, from refined, subtle textures to more dimensional surfaces.

Luxury Textures also features a selection of sophisticated small-scale patterns that function similarly to a textured solid, adding warmth and focal interest to a space without being intrusive.



Wallpaper: Twilight WND6210-WT; Yves Sofa WS106, Fabric: 33124-11; Pillows (bottom to top/left to right): 34465-16, 32367-52, 34473-11, 34409-1611, 34464-16, 34473-11, 34465-21.

Rhythmic striations and abstracted geometrics work seamlessly alongside more subtle textures in the collection and deliver an unexpected layering tool within a room’s design scheme.

The Luxury Textures collection is now available in Kravet showrooms. For more information, visit **kravet.com**. Shop *Nod to Mod* at **curatedkravet.com**.



Serge Bucket Chair WS105, Fabric: L-Haute in Cement; Pillow (on chair): 34465-21; Pillows (left to right): 34465-16, 34405-516, 34399-5011, 31816-50; Rug: Diminish in Ocean Deep CK-101287.OCE.

ARTWORKS *Art Enthusiasts Will Revel in This Striking Introduction*



Fabric (Top left to right): 34607-4, 4242-411, Reflex-411, Neverend-12 (background).

Through a lens of artistic celebration, Artworks by Kravet presents a modern point of view with a nod to cutting-edge fashion and inspiring works of art. The masterful mix of bold, graphic patterns alongside small-scale decorative designs makes for a dynamic and explorative collection.

Prints come to life in an array of color stories, from deep charcoals and spa neutrals to lively teals and bright poppy hues. Coordinating, textured plains round out each color story for endless scheming options.

Rendered in cut velvets, intricate embroideries and unique wovens, Artworks offers visual intrigue – akin to visiting an art gallery. The collection cleverly translates the exciting world of art into striking yet functional designs for the home.

The Artworks fabric collection is available in Kravet showrooms. For more information, visit **kravet.com**. Shop *State of Art* at **curatedkravet.com**.



CUSTOM INSPIRATION

Kravet Furniture Custom offers designers comprehensive choices and the ultimate flexibility to deliver personalized seating designs that reflect each client's unique style. After selecting from 66 frames – from ottomans to sectionals – designers can quickly and easily tailor the piece by choosing from 2 depth options and any “by-the-inch” width, 13 arm styles, 6 backs, 10 leg, base and skirt options, and 26 finishes. Final touches include selecting fabric, trim, cushion type, nailhead finish and more.

The Kravet Furniture Custom collection is available in Kravet Showrooms. For more information, visit kravet.com.



LUXE LIGHTING

Based in Los Angeles, Luxe Light and Home uses a curated roster of skilled artisans and superb materials sourced around the globe to create gorgeous, one-of-a-kind lighting and accessories for the artful home.

Every Luxe design, all of which are sold exclusively via Kravet showrooms nationwide, is both classically beautiful and freshly modern. Tastemakers love the attention to detail, exquisite materials and understated glamour of our pieces.

Sally Thomas Cooper
President Sales & Marketing
“I absolutely adore this light that’s something of a cross between a feather boa and an angel’s halo. We craft it with hand-hewn quartz rock crystal points we found in Brazil, which create a richly textured interplay of light and shadow.”



GIO MEDICI



Jason Kai Cooper
CEO

“When I was a theater lighting designer, I loved how the set people could change the mood and the scene in an instant. We decided to create an elegant chandelier with interchangeable jewelry-inspired cuffs for the lights on each arm so you can quickly transform its tone.”

Loni Spiker
Designer

“The juxtaposition of hard glass blown into a soft, macrame cord shape makes this piece my absolute favorite. The glass is hand-blown and comes in three classic finishes that offer magnificent translucent texture and color.”

TESSA



To learn more about the entire Luxe Light and Home collection, visit LuxeLightandHome.com or visit your local Kravet showroom.

TRENDING NOW

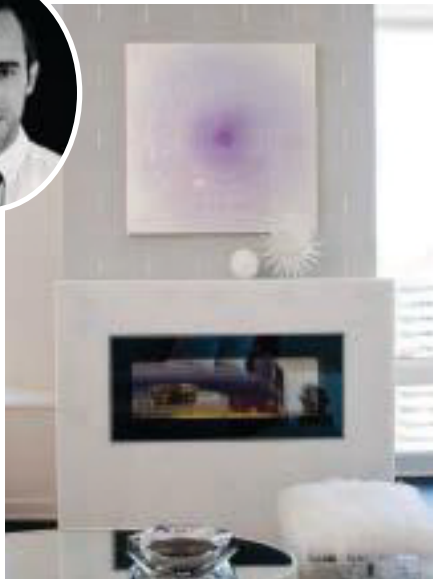
HouseBeautiful *Next Wave Super-Stars Share Memorable Design Moments*

Thanks to *House Beautiful's* Next Wave initiative, we were able to tap into the 2017 rising talents' insights on project challenges, sources of inspiration and lessons learned along the way. Here we offer a selection of their inspiring interiors along with some decorating wisdom straight from the pros, as *House Beautiful* would say!

Eche Martinez Letting Art Dictate the Decorative Process

"During one of my favorite collaborations with a client, we were tasked with finding artwork that was energetic and mobilizing. Inspired by the art, we designed the project to emphasize each piece, giving every room a very defined vibe."

echemartinez.com



Emilie Munroe
How Kids and Chic, High-End
Fabrics Pair Better Than You Think

"Parents worry about using professional-grade fabrics in a child's room, but by upholstering a window seat cushion or accent pillow in bold, timeless fabric—like we did here, using Kravet fabrics—you create a unique and timeless piece with the longevity to last throughout the life of a room."

studiomunroe.com



Chad Graci Striking a Balance Between Formal and Inviting

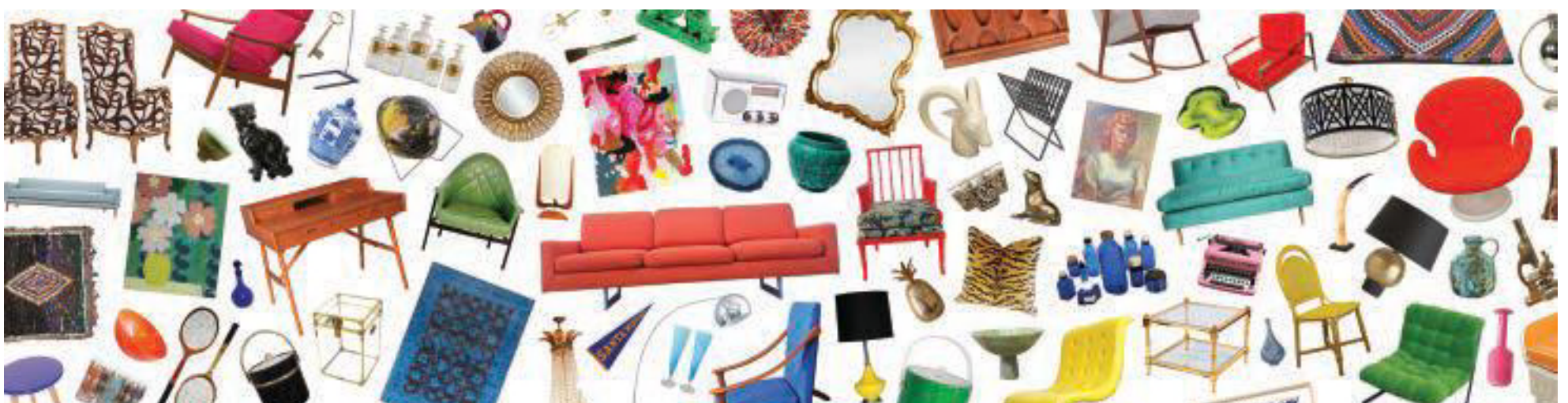
"This project had the challenge of making a room with grand proportions and statement pieces feel accessible and comfortable, while retaining somewhat of a formal air. This room was all about balancing subtle textures and various scales of pattern for a cohesive, layered look."

graciinteriors.com

Charlotte Lucas
Being Courageous with Color

"A very trusting client once let me paint her reading nook mustard yellow and wallpaper the walls with a red palm leaf pattern! She was the brave one...it is the happiest nook I've ever designed to date."

charlottelucasdesign.com



Chairish

The Vintage Marketplace for Design Lovers



GORGEOUS GREENERY

Perfect Coordinates to Bring Color of the Year 2017 PANTONE 15-0343 Greenery to Life

PANTONE 15-0343 Greenery is life affirming. Emblematic of the pursuit of personal passions this tangy yellow green shade speaks to the desire to express, explore, experiment and reinvent, imparting a sense of buoyancy. Whether on its own or paired with other shades, Greenery brings a feeling of assertive vibrancy and vitality. It provides self-assurance and boldness to live life on one's own terms, redefining what makes for success and happiness.



Bottom Left, Image on Right: Background Fabric: 34070-316, Fabrics (clockwise from top): 30316-3, Sol-3, Manta-3, Lightspeed-313, Dotkat-3. Find it on CuratedKravet.com. Clockwise from Left: Tucker Urn QR-16427.WHITEGREEN.0, Ophelia Box QR-16298.GREEN.0, Natalie Side Chair QR-16495.GREEN.0, Posie Dot Pillow QR-16287.PICNICGR.0, Arthro Objet QR-16425.GREEN.0.

DEPENDABLE DESIGN

Kravet Contract Introduces a Plethora of Exciting New Performance Collections

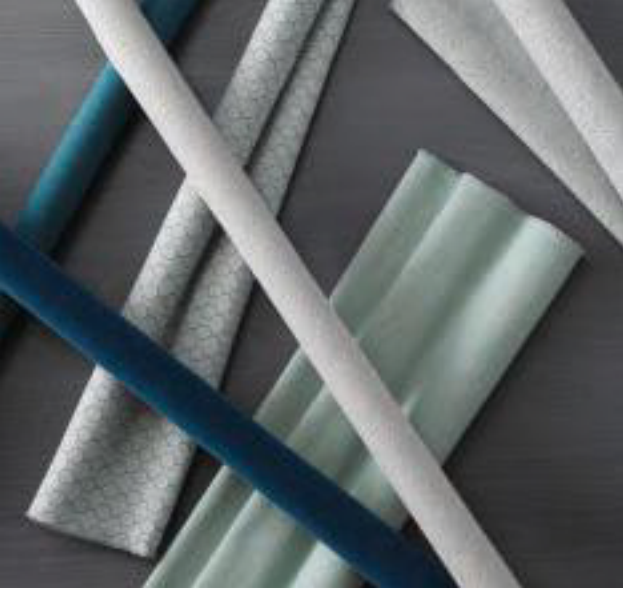


Faux Leather Extreme Performance

This high-performance vinyl upholstery boasts superior strength, featuring a protective coating to withstand commercial disinfectants and chemical cleaners. Available in eight fashion-forward patterns in more than 80 colorways, the collection is also environmentally friendly, exceeding industry performance standards.

InCase Crypton Guaranteed In Stock Textures

Kravet Contract introduces Guaranteed In Stock Performance Textures. Recommended for upholstery use, these fabrics feature INCASE performance finishes in a stunning range of colors, textures and finishes. INCASE advance performance finishes provide superior liquid and stain repellency, easy stain release and odor resistance.



Guaranteed In Stock Value Weaves

This value priced collection of in stock fabric presents a versatile array of on-trend woven designs that are easy to use and available in two books of stylish color patterns, Mineral and Pop, ranging from distinctive shades and more playful hues.

Left Image (top to bottom): Rock Solid-19, Rugged-6, Hulk-5, Extreme-12, Spartan-11, Invincible-110, Iron Man-16, Supreme-13. Middle Image Bottom Rolls (left to right): 34636-13, 34629-11, 34634-523, 34635-11; Top Rolls (left to right): 34632-505, 34637-1511. Right Image (top to bottom): 34650-814, 34651-814, 34638-521.

OUTSIDE INFLUENCES

Designing Outdoors with Designer and Author Bea Pila



There are indeed some stunning interiors, but it's the natural wonders—a fiery sunrise or sunset, the ebb and flow of water, or a flower bloom—that make us stop and stare. So why then put a secondary emphasis on the outdoor areas of our homes? This desire to reconnect with nature paves the way for us to consider the design of our outside environments the same way we would our indoor ones. Sky's the limit!

For more information about Bea Pila or her book *Sacred Spaces for Inspired Living* (Balboa Press, 2017), visit bpiladesign.com.



LIGHTEN THE MOOD

Lighting is the greatest intangible when it comes to setting a tone. A perfect blend, however, is necessary to get the right effect. Too much can actually cause anxiety, so I recommend a few pieces to shade the sun's glare. Cutout screens or trellises are particularly beautiful for the patterns they reflect on adjacent surfaces. By night, I recommend inserting a little light in its natural form, like fire pits, candles, and lanterns. If you still need some artificial support, opt for string lighting to brighten up the space without killing the mood.



CONSIDER THE EMOTIONAL IMPACT

In today's hyperactive world, we think we know how to relax, yet have a hard time sitting still and just being. The outdoors is the perfect environment to attempt this. The trick is to let your surroundings provide you with the action. Kicking back on a rocking chair, hammock, swing, or hanging bench allows you to be stimulated and relaxed at the same time. Fire pits, water features, or flowing fabrics also provide mesmerizing movement that lures us to stay.



GROUND THE SPACE AND ACCESSORIZE

Just like with fashion, accessories can really polish a look. A great rug anchors furniture and brings a softness we seek within our homes. Elaborate on this with plush pillows and consider anything else you might have for an indoor room, such as chandeliers, tabletop sculptures, and candles—thanks to technology, there are so many new furnishings being produced that are both beautiful and weather resistant.



INCORPORATE GREEN

Blur the line between man-made structures and nature even further. Natural elements are the perfect compliment to an outdoor space. I like to add river rocks in flooring to add depth to an otherwise cold slab. Even if you don't have a backyard, you can still incorporate greenery. Bring in a leaning wall planter and create your own version of a garden or install some moss siding for a sleek flora fix.

ABSTRACTS WITH ATTITUDE

A Modern Take on Centuries-Old Techniques



The Modern Collection for Kravet Carpet highlights the importance of versatility. From modern classics to geometric designs and abstract phantom prints, these beautiful rugs are offered in a range of sizes for quick shipping.

Our wide range of designs can capture any mood – from contemporary sensibility with our Modern Luxe collection to a more cultured, global look with our Congo line of carpets. Free flowing, organic patterns in stunning bursts of color from our Abstracts collection are the perfect transitional flare to add sophistication to any room.

Exquisitely created by hand, our collage of rugs are available to suit any customer’s needs. To browse our full collection of Kravet Carpets, go to kravet.com.



TRADITIONAL HOME.

Timeless Design
for MODERN LIVING

kravet AS SEEN IN **TRADITIONAL HOME**

Featuring Kravet “Lux” fabric in Glacier on dining chairs.

TRADHomeMag.com

TraditionalHome.com

Top Image Hanging (left to right, top to bottom): Jamali - Lead, Diminish - Ocean Deep, Gandava - Slate, Kinda - Pewter, Unreal - Silver Rain; Floor (back to front): Vesper - Vanilla, Indefinite - Bay Breeze, Philosophical - Thunder Storm, Jamali - Bronze. **Bottom Left Image** Top to bottom: Kroondal - Oyster, Kroondal - Mercury, Lesidi - Snowcap. **Bottom Right Image** Left rolls top to bottom: Buck's Fizz - Pewter, Sharkskin, Powder, Lacquer, Crystal; Right, top to bottom: Crista Brute - Silver, Sun, Aqua.

ONE PIECE THREE OPTIONS

A Classic Silhouette Becomes a Canvas for a Trio of Distinctive Looks

For spaces that multi task, such as family rooms that also serve as guest rooms, the key is to go with pieces that are versatile in functionality as well as style. We challenged Kristine Irving, Creative Director and Design Principal of Boston-based Koo de Kir Architectural Interiors, to select a focal piece from **CuratedKravet.com** and style it in three dramatically different ways using all products from our website. Here's what she came up with:

THE PIECE: THE TRINITY SLEEPER SOFA

"I picked a smart and chic transitional grey fabric covering the ready-to-ship Trinity Sleeper Sofa because it's an easy partner for almost any look."



1 Understated Glamour



"The bold hit of teal from a pair of Bimini accent pillows adds contrast to the elegant grey sofa fabric. The Leather & Brass Brogue tables add weight and texture, while the Weavochi Dusk natural linen wallpaper provides a grounding influence for all the players. For a touch of unexpected glamour, I added the Diana Leaf gold floral wall sconces."

2 Lodge Chic



"For an Aspen lodge-inspired look, try mixing the Trinity sofa and a vintage Turkish rug with the Cristal Cowhide layered over it for depth. The warm caramel color of the Vavoom pillow balances the light and earthy Retouche linen pillow."

3 Industrial Bohemia



"For the bohemian industrialist, I softened the sofa's seriousness with a playful but elegant Kravet marbled wallpaper. I love the modern feel that the Porto floor lamp and the De Leon Closed metal cabinet add to this look."



For more about Kristine Irving or Koo de Kir Architectural Interiors, visit koodekir.com

All of the products on this page are available on Kravet.com and CuratedKravet.com. **Trinity Sleeper Sofa QR-15026.GREY.0**. 1. **Understated Glamour** Brogue Leather Side Table QR-11236.TEALBRASS.0; Wallcovering: W3398-11, Pillows: Bimini Accent Pillow BIMINI 20; Carpet: Splashback Hand Knotted Tibetan, Multi Size Splashback Blue Granite; Diana Leaf Sconce QR-10572.GOLD.0; Brogue Leather Console QR-11238.TEALBRASS.0. 2. **Lodge Chic** Side Tables (left to right): Rosewood Drinks Table QR-16707.ROSEWOOD.0, Wrapped Parsons Side Table QR-12809.BROWN.0; Floorcovering (front to back): Cristal Cowhide, 6' X 6' QR-15753.CHAMPAGNE.0, Vintage Turkish Oushak, 7'6 X 11' QR-15851.TAUPE.0; Pillows (left to right): Vavoom Pillow, Ready To Ship Retouche Pillow RETOUCHE 2; Rambo Table Lamp QR-16541.GRAY.0. 3. **Industrial Bohemia** De Leon Closed Nightstand QR-14542.STEEL.0; Dante Table Lamp QR-12496.SILVER.0; Wallcovering: W3356.1610; Pillows (left to right): Ready To Ship Velvet Pillow QR-15720.OLIVE.0, Piquillo Pillow PIQUILLO 12; Porto Floor Lamp QR-10110.SILVER.0.

OSCAR DE LA RENTA III

Lee Jofa’s Sophisticated New Addition Delivers a Colorful Dose of Chic, Global Style

With a colorful sense of modern elegance and a nod to fashion, Lee Jofa’s third collection from Oscar de la Renta embodies the essence and eclectic sensibility of Mr. de la Renta’s exceptionally chic style.

Oscar de la Renta III pays homage to the eminent designer’s incredible flair for mixing styles with an exclusive collection of sophisticated new fabrics and wallcoverings. The stunning craftsmanship of intricate hand crewelwork, embroideries and jacquard weaves is a representation of the brand’s unique and celebrated aesthetic. Rich crimson, sepia, indigo, aqua, gold and tobacco color stories are complemented by a refined neutral palette of tone-on-tone ivory, tobacco and platinum. Collection highlights include the batik-inspired Tortuga Bay, a stylized floral print with a subtle trellis background that recalls the tropical colonial houses of de la Renta’s home in Punta Cana in the Dominican Republic. Las Palmas is a wonderful French documentary design, which features tropical foliage reminiscent of a 19th century chintz and Sameera is derived from a beautiful archival Indian Mughal pattern that’s also available in a coordinating wallpaper.

Oscar de la Renta III is available at Lee Jofa showrooms and through the Lee Jofa network of licensed representatives. For more information, visit leejofa.com.



TopLeftImage Pillows (Top Row, Left To Right): 2017102-101, Trim: TL10110-1; 2017102-111, Trim: TL10110-1; 2017102-6, Trim: TL10110-1; Pillows (Bottom Row, Left To Right): 2017102-23, Trim: TL10110-1; 2017102-15, Trim: TL10110-1P. **BottomLeftImage** Drapery: 2017105-243; Holland & Company Lucille Shape Leg Table 9850. **Top Right Image** Upholstered Wall: 2017107-515, Trim: TL10122-51; Prescott Skirted Chair H4235-20 in 2017104-5; Pillow: 2017105-515, Trim: TL10110-5. **Bottom Right Image** Drapery: 2017109-23, Trim: TL10121-3; Cheshire Chair H4270-20 in 2017106-30; Pillow: 2017102-23, Trim: TL10119-343; Macrae Gammell Table in Mahogany 170; Rug: Cirque Canvas.

LETTERS FROM PARIS

An Insider’s Guide to the City of Light by Penny Drue Baird

Among its numerous lures, Paris is home to two renowned international home furnishings shows: Maison et Objet and its sidekick Deco Off. Maison et Objet runs twice a year and features large brands and commercial companies from around the world. Deco Off, an annual event, arose from a number of smaller home furnishing and fabric companies wanting to strut their newest collections in a more boutique setting.

Apart from the furnishings shows, the two main areas of Paris known for fabric and home décor showrooms are the Rue du Mail in the second arrondissement and Place de Furstenberg and Rue Jacob in the sixth. It’s magical walking from shop to pop-up shop with throngs of visitors in the streets and everyone in a celebratory mood.

When it’s time to pause and refresh, I recommend the wonderful Ladurée on Rue Jacob. It’s fitting because it resides in the building once belonging to charismatic designer Madeleine de Castaing. A study in coziness, the second floor salon is called the MC room in tribute to her sumptuous design aesthetic. On the Right Bank, don’t miss Chez George, a quintessential old-world bistro directly on the Rue de Mail.

HOTELS

Bachaumont

Located on the Right Bank, Bachaumont is a hip, modern, full-service hotel with a popular restaurant. Hotel Bachaumont, (sixth arrondissement) 18 Rue Bachaumont, +33 1 81 66 47 00, hotelbachaumont.com

Belle Juliette

This Left Bank hotel is high-style yet funky, very individual with top service and an internal spa. Belle Juliette, (second arrondissement) 92 Rue du Cherche-Midi, +33 1 42 22 97 40, hotel-belle-juliette-paris.com

The Ritz

For a classic stay, the most Parisian of all Parisian palaces is recently redone and still taking everyone’s breath away. Hôtel Ritz Paris, (first arrondissement) 15 Place Vendôme, +33 1 43 16 30 30, ritzparis.com



ABOUT PENNY
Celebrated interior designer and owner of Dessins, LLC, Penny Drue Baird inspires her creativity by traveling throughout the French and English countryside and combing the markets of London and Paris for fine antique furniture, objets d’art and cutting edge new designs. Penny’s authored three books and was named to the AD100 over twenty times. She divides her time between New York and Paris.

For more about Penny Drue Baird, visit dessinsllc.com. For more information about Maison & Objet and Paris Deco Off, visit maison-objet.com & paris-deco-off.com.

SHOPPING

La Grande Épicerie de Paris

The food store of Le Bon Marché is not to be missed. The sights and sounds are remarkable and besides drooling over products and gifts to bring home, there are numerous stations where you can stop for lunch. La Grande Épicerie de Paris, (seventh arrondissement) 38 Rue de Sèvres, +33 1 44 39 81 00, lagrandeepicerie.com

Un Jour Un Sac

Customizable handbags: the straps come in different materials and colors and the body of the bag is available in many fabrics, even paper. Start with one set of handles and a few fabrics and change at whim. Un Jour Un Sac, (seventh arrondissement) 27 Boulevard Raspail, 75007, +33 1 42 65 00 05, francoisrenierparis.com

Galerie André Hayat

The best place to go for midcentury designer furniture such as Jean Royère and Jacques Adnet—you can also find Hayat’s original rock crystal trimmed mirrors here. Galerie André Hayat, (seventh arrondissement) 23 Rue de Lille, +33 6 12 86 33 89, galerieandrehayat.com



RESTAURANTS

Pierre Sang in Oberkampf

France’s Top Chef winner Pierre Sang Boyer cooks an innovative, well-priced menu at a comptoir (no reservations and no choices). I recommend going at 7pm and getting a great counter seat with a view. Boyer’s cuisine is delicious and a wonderful value. Pierre Sang in Oberkampf, (eleventh arrondissement) 55 Rue Oberkampf, pieresangboyer.com

La Méditerranée

A classic Parisian restaurant, La Méditerranée specializes in seafood, as one can guess from the name. The décor coupled with a view of the Odéon-Théâtre de l’Europe creates a charming environment. La Méditerranée, (sixth arrondissement) 2 Place de l’Odéon, +33 1 43 26 02 30, la-mediterranee.com

Ma Cocotte

Philippe Starck’s restaurant in the Marché aux Puces-Serpette is a tribute to great design. Although a simple menu, everything is perfectly done—and they have one of the best terrine de campagne in town. Ma Cocotte, (eighteenth arrondissement) 106 Rue Des Rosiers, +33 1 49 51 70 00, macocotte-lespuces.com

THE LATEST FROM LEE JOFA

Explore Exciting New Styles and Upholstery Frames

Lee Jofa expands its offerings with new luxurious upholstery designs, exquisitely crafted occasional tables and mirrors.

Inspired by its English heritage, the new Lee Jofa Furniture introductions are a beautiful assortment of handcrafted pieces paying homage to time-honored styles ranging from country house to mid-century modern décor.

Lee Jofa’s mirror collection includes exclusive designs that draw inspiration from antique and vintage styles that perfectly coincide with the Lee Jofa aesthetic. Skillfully crafted using 18th century techniques, these artisanal mirrors add just the right amount of sophistication to any room.

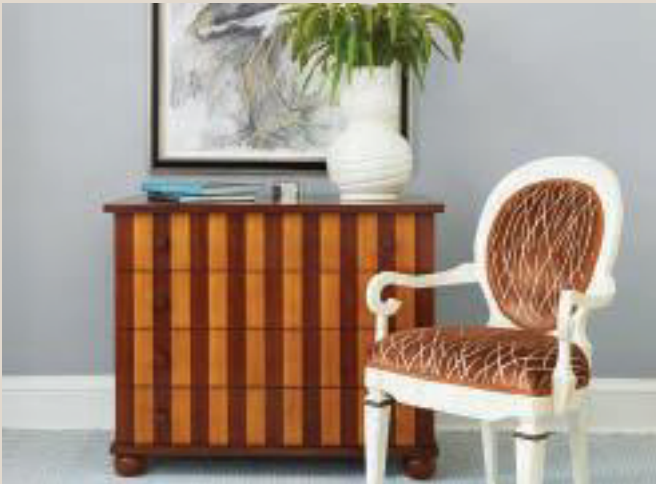
Complementing the new upholstered assortment is a dynamic collection of occasional tables. Clean lined and modern in feel, these stunning transitional tables are also manufactured in the U.S.

Explore more of these offerings at Lee Jofa showrooms or online at leejofa.com.



NEW FROM BUNNY WILLIAMS

From chic lighting to stylish tables, dozens of new coveted pieces from Bunny Williams Home are now available at Lee Jofa. Each piece shines with the legendary designer’s distinctive aesthetic and adds another dimension to her repertoire. Bunny Williams Home offers a diverse selection of high-quality furniture that can also be customized upon request. The beautifully handcrafted silhouettes include reproductions of Williams’ own treasures as well as original designs that can be used to create both charming and sophisticated interiors.



Top Left Image Acton 22S Bunching Table. Top Right Image Drapery: 2016100-173; Montague Chair H4707-20, Fabric: 2016124-16; Pillow: 2016133-170, Trim: TL10114-16; Mirror: Yasmin OFM1500M; Wreath Commode 9817 from Holland & Co; Carpet: Netley Linen Rug CL-100513. Bottom Right Image Finley Chest BLH-1268; Eclipse Arm Chair BLH-UPH-1060 in 2015114-622.

ACROSS THE POND

Our European design partners are a constant source of inspiration for on-trend, luxury style. This season's introductions looked to exquisite ceramic works of art, artistic periods throughout history, and more, which culminates in a stunning assortment of brilliant design.



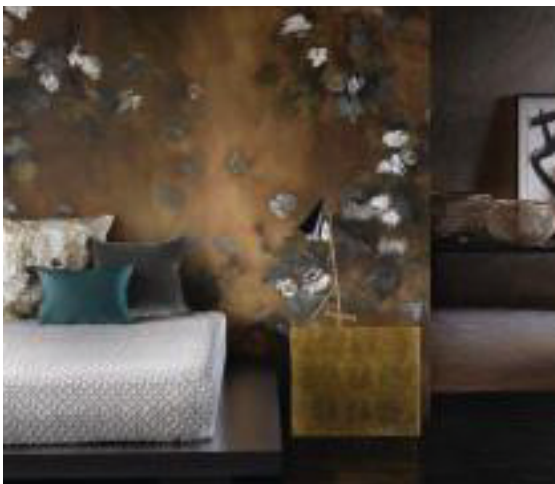
COLE & SON | *The Ardmore Collection*

Cole & Son introduces new and exciting wallpapers and borders in collaboration with Ardmore Ceramic Art. Ardmore's charming and exuberant ceramic creations have both a narrative and a strong heritage rooted in African tradition and storytelling through the language of craft and craftsmanship. In a range of conversational, colorful and vibrant pictorial wallpapers and borders, the Ardmore Collection reflects the ceramics' celebration of Africa's birds, big cats, elephants, rhinos, crocodiles, mischievous monkeys and exotic flowers; as well as the beautiful patterns of Zulu beadwork and woven basket ware.



LIZZO | *New Fabric and Wallcoverings*

Evocative in nature, Lizzo fabrics illicit genuine emotion with hypnotizing colors and textures that cannot pass unnoticed. This Spring, Lizzo introduces a collection of stylish fabrics with influences ranging from the exotic flora and fauna of the Orient to the evocative and sensual spaces of Arabic reminiscence. Lizzo also presents a new collection of wallcoverings, Scene di Interni, which features textures, murals, and vinyls in a sophisticated color palette. Foglie di Vite wallcovering is a special highlight, created in collaboration with Italian painter Elena Carozzi, whose subtlety, lightness and sophistication seduced the Lizzo creative team.



GASTON Y DANIELA | *Lorenzo Castillo III*

In his third collection, Lorenzo Castillo emphasizes new techniques which allow for the combination of texture and pattern. This includes hand sketched Picasso-style designs, Spanish iron grids from the Carlos IV late 18th century period, Pop Art designs from the late 1960's period and a printed Japanese floral linen inspired by Arts and Crafts. Upholstery weights are also launched using jacquard velvets in labyrinth, dimensional spirals and honeycomb designs. Castillo maintains his specific color palette of emerald greens, navy, chocolate and dark gray, with new subdued additions in light gray, beige, taupe and marble white.

ANDREW MARTIN | *National Gallery Collection*

Andrew Martin is bringing world class paintings to life with a new elaborate wallcovering collection under license from the National Gallery Museum. Cover the walls of any room with an iconic portrait by Leonardo da Vinci, a stunning scenic view by Canaletto or a breathtaking impressionist piece by Monet. The National Gallery Collection of bespoke digital wallpapers adds dimension to any room and is sure to be a conversation starter. Once a painting is chosen from the National Gallery, it is printed on vinyl for easy and durable use.



THOMAS O'BRIEN

An Artful Approach to Design



We caught up with Aero Studios' master of multitasking to find out his secret to staying so creatively charged:

Fine Art plays an integral role in your interior design, especially photography. What draws you to the medium and is there a genre you gravitate to or photographer you collect?

I came to New York to study art at the Cooper Union. Photography in particular has always been a vibrant part of my interests. I've collected all kinds over the years, from 19th century pieces, to new artists who we bring to Aero, to modern masters like Irving Penn. I'm especially drawn to Penn for his intriguing portrait studies.

Speaking of art, is it true there's an artwork that inspired the design for one of the fabrics in your new Groundworks collection?

Solitaire is a cut velvet based on a favorite vintage pen-and-ink drawing I've kept in my office for years. It's an anonymous abstract piece, but so singular, special and beautiful. It was made with such a patient, intricate, skilled hand and that's part of its mystery. We turned portions of it into a rhythmic repeat that is very delicate and interesting as a softly patterned, textured velvet. It can look organic or classical depending on what it's combined with.

You always have a lot of projects and collections in the works at any one time, so how do you recharge and stay inspired?
I recharge by being at home, out in Bellport, Long Island. I do so much work in home and design, but as much as there are parts that are very beautiful, it's really the practical things that absorb me, the question of how to get those functional objects to be as beautiful and as special as they can be. Those are the constant experiments in my life at home—from cooking to gardening to organizing and collecting things—that keep me inspired and give me new ideas.

Thomas O'Brien is a New York-based interior and home furnishings designer and the founder of Aero Studios and the home boutique, Aero Ltd. For more, visit aerostudios.com.

For more about the Thomas O'Brien Textiles Vol. V collection, visit your local Lee Jofa showroom or leejofa.com.



Fabrics: (Top Row) GWF-2584-153, GWF-3522-10, GWF-3519-323, GWF-2584-816, GWF-2584-101, GWF-3519-515, GWF-2584-166; (Bottom Row) GWF-3922-6, GWF-3519-550, GWF-2584-168, GWF-2584-116, GWF-322-115, GWF-3519-616; AERO Tray in natural walnut courtesy of AERO.

COLORS YOU CAN LIVE WITH

Ask about the new sumptuous hues

NOW AVAILABLE AT KRAVET

Like us on Facebook: [Ultrasuede Interiors](#)

ultrasuede®

Beautiful Possibilities

BRITISH INVASION

Kravet's NDEE Program Crosses the Pond for a Design-Inspired Adventure of a Lifetime

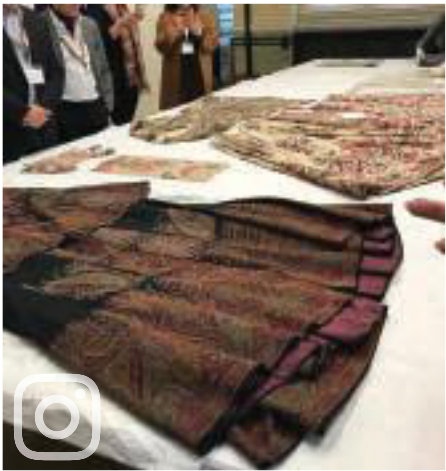
The latest edition of Kravet's National Design Education Experience awarded 20 talented designers with a dream trip to London for an immersive exploration into the rich and historic design culture of the United Kingdom.

Hailing from all over the country, our guests were provided exclusive access to some of London's most celebrated design studios, workshops and factories. The NDEE customers visited the famed archives of the Victoria and Albert Museum and the renowned studios of Mulberry, GP & J Baker and Andrew Martin. They also met with the creative visionaries behind some of the UK's most iconic global brands and enjoyed private events at the Royal Academy Keepers house and the Ham Yard Hotel—and of course a trip to the Tower of London was on the itinerary!

Here's a round up of memorable moments captured by our guests.

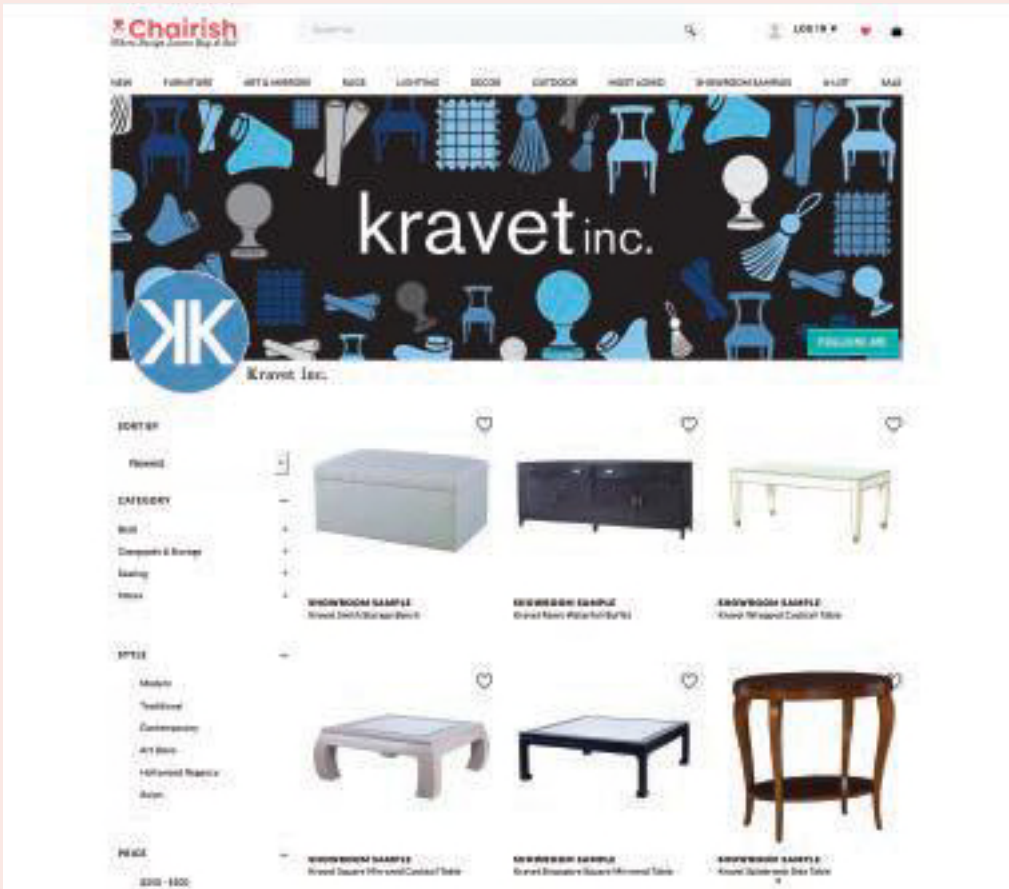


What's Next?
Florence.
Ask your local
showroom staff to
tell you more.



ADD TO CART

A New Way to Shop a Showroom



Kravet's official store debuted with almost 70 pieces, including sofas, chairs and tables. Visit Chairish to see what's currently available at the Kravet store.

Chairish, the online resale marketplace for high-quality furniture and vintage décor, now offers showroom samples. Launched with more than 20 coveted brands (including Kravet), the much-loved design site now lists ready to ship lighting, upholstered pieces and case goods that were part of previous season's floor sets.

For consumers, it's a chance to own well-designed pieces from collections not readily available online—and at a considerable discount. For showrooms, it's an easy way to expand their brand's reach and connect with a new audience while making room for the upcoming seasons.

Founded in 2013, the San Francisco-based company started with just 38 listings and now boasts over 150,000, offering a well-curated marketplace for quality used home furnishings.

To learn more about Chairish and to see their full selection of showroom offerings, pre-owned furnishings or vintage décor, visit chairish.com.

BOLD AND BEACHY

Marks and Frantz Livens Up a Classic Connecticut Beach House

With a three-month deadline to design a 6,000-square foot summer home, New York City-based design duo Marks and Frantz had a small time frame to deliver big dreams. Having worked with this family on two homes prior, Lydia Marks and Lisa Frantz were familiar with their adventurous sense of color and personal style. The only direction they were given: make the home look and feel like it had been in the family for generations. In just three short months, Marks and Frantz delivered a colorful, energetic, welcoming move-in ready home – just in time to host Thanksgiving dinner.

INSPIRATION

Estée Lauder’s classic East Hampton home as reimaged by her granddaughter Aerin Lauder, *Grey Gardens* 1975 documentary, and Dorothy Draper’s work in The Greenbrier Hotel all informed the ‘preppy’ aesthetic that guided Marks and Frantz’s design for this home. The goal was to make this beach house feel whimsical, fun and beachy without the cliché of blue and white that is so prevalent in beach houses.

AESTHETIC

The house was a newly constructed classic cedar shake beach house. The interior is now a youthful preppy-chic. It feels both playful and collected at the same time. Fringe was a recurring theme throughout this home. From the tassel trim fringe on the turquoise family room drapes to the bullion trim on the living room sofas and the twisted fringe on patio umbrellas; all giving a nod to classic French Riviera style.

CHALLENGES

The peaked rooflines and dormers in every bedroom in the house were the trickiest design challenge that the designers encountered in this home. Marks and Frantz really wanted to use wallpaper in all the bedrooms, but didn’t want to make the mistake of visually diminishing the ceiling height.

SOLUTIONS

The solution in the guest room was to paper the entire room, ceiling and all. In the black and white guest bedroom and master bedroom, the designers incorporated a different solution for how to handle the multiple roof lines and various dormers. Marks and Frantz got clever with the window treatments in both rooms to give the room some visual continuity and focal points.



ABOUT MARKS & FRANTZ INTERIOR DESIGN

Lydia Marks and Lisa Frantz’s interior design firm creates a synergy between interiors, home furnishings and set decoration. Best known for their trendsetting and iconic set decoration for *Sex and the City* and *The Devil Wears*

Prada, the pair is also known for superb residential and hospitality interiors. The award-winning New York City-based multidisciplinary interior design firm combines modern traditional design with Hollywood regency. For more information, visit marksandfrantz.com.





Opposite Page Image Sofa Fabric: 8013140-11, Side Table: OTA3141, Lamp: BLH1112, Romans: 8013138-53, Drapes: 8013147-712. This Page, Bottom Left Image Lampshade Fabric: 8012138-5; Middle Right Image Shade Fabric: 33103-81, Wallcovering: Rousseau-Charcoal; Bottom Right Image Sofa Fabric (left): 8012109-13, Sofa Fabric (center): 8012129-13, Drapes: 8012134-13.

DURANCE AND LE PARNASSE

Two New Brunschwig & Fils Fabric Collections



Inspired by its namesake river valley in Provence, the exclusive Durance Collection from Brunschwig & Fils comprises classic coordinate woven fabrics designed to capture the charm and beauty of this picturesque region in southeastern France. Using casual yet sophisticated ticking stripes, plaids and small-scale woven fabrics, the collection offers effortless style with purpose.

Also new from Brunschwig & Fils, Le Parnasse collection offers a luxury line of fabrics named for the renowned 19th century French poetry movement. Traditional yet whimsical patterns in soft colorations reflect the era’s romantic spirit. Elegant embroideries, fine prints, striated weaves, delicate sheers and cut velvet round out this collection of eleven new and reimagined designs.



Both Durance and Le Parnasse collections are now available in Brunschwig & Fils showrooms. Visit brunschwig.com for more information.

Top Left Image Wallpaper: BR-69071-3; Louis XVI Bergere Chair BR-A2007 in 8017101-403; Pillows (Top to Bottom): 8017102-23, Welt: 8012140-111; 8017100-40, Trim: T8012104-4; 8017103-3, Trim: T8012104-33; 8017100-3, Welt: 8017121-3; 8017102-40, Welt: 8012140-111. Right Image Clockwise from top left: 8017108-3, 8017109-119, BR-70795-14, 8017112-3, 8017106-14, 8017111-717, 8017109-14.



PARTY READY

You’re invited! Our newest book, *VERANDA Entertaining* (\$40, Hearst), offers entrée into the best dinner parties and alfresco fêtes from the pages of VERANDA. It’s a visual feast for all things celebratory and stylish and full of decorating and tabletop ideas, whether you’re planning an intimate gathering or a full-fledged gala. Available on Amazon and where fine books are sold.

ULTRASUEDE

Carefree Summer Style All Year Round

When it comes to decorating high-traffic family zones, selecting upholstery that’s as stylish and versatile as it is kid and pet-friendly is key.

Low-maintenance Ultrasuede® combines the soft, appealing comfort of natural suede with supreme performance benefits. Responsibly engineered, the original ultra-microfiber is valued for its easy-care features and luxurious hand.

The secret is in the microfibers, which are smaller in diameter than a strand of human hair, but contrary to their size, extremely durable. And Ultrasuede® isn’t woven, so there’s no overlap and nowhere for dirt to get trapped.

Kravet’s collection of Ultrasuede® is available in Kravet Showrooms. For more information, visit kravet.com.

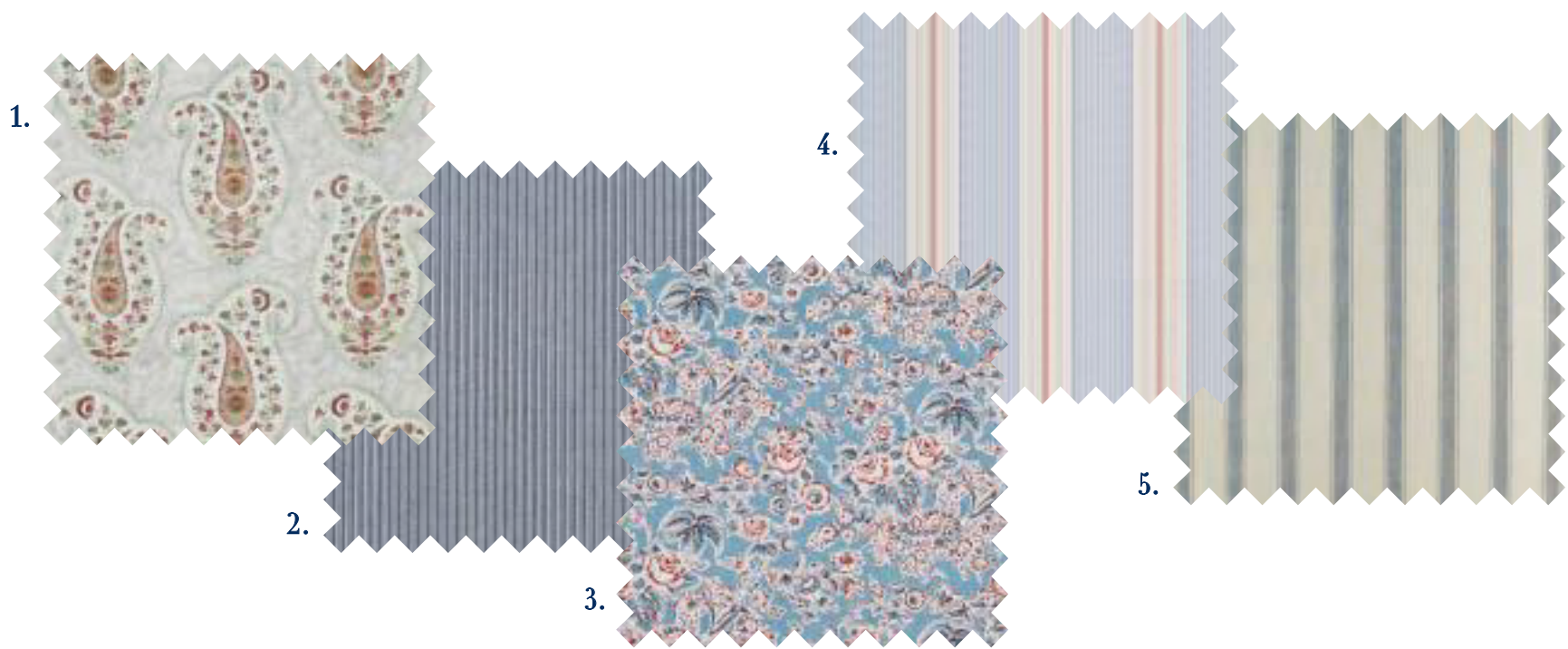


RALPH LAUREN HOME HALF MOON BAY FABRIC COLLECTION

Inspired Patterns and Stripes for an Endless Summer Vibe



Ralph Lauren Home’s Half Moon Bay fabric collection evokes the relaxed, seaside style embodied by iconic coastal locales from Malibu to Montauk. The collection offers a playful and eclectic mix of patterns, including oversized paisleys and romantic florals alongside classic ticking stripes, in a palette of warm, beachy hues. Find this collection in select Kravet showrooms and online. For more information, visit kravet.com.



1. Stepping Stone Paisley in Mineral, 2. Wharf Road Ticking in Denim, 3. Crows Nest Floral in Pond, 4. Gin Beach Ticking in Red/Blue, 5. Frenchman's Creek Dhurrie in Slate

STYLISH SISTERHOOD

*Kappa Kappa Gamma Alumna and Award-Winning Designer
Susan Brunstrum Heads Back to Campus*

More than 70 Kappa Kappa Gamma sisters at University of Illinois live full-time in the sorority house, utilizing the spaces for meetings, studying, entertaining, and recreation. Last summer, Susan Brunstrum and her team at Illinois-based Sweet Peas Design took on the challenge to redesign the informal living room and study into fun and functional spaces for the ladies of KKG to call home.



APPROACH

Everything that went into the design had to be multi-functional, and easily reconfigured. Sweet Peas Design created five floor plans for each of the two rooms using the same furnishings each time to show how the room can be rearranged to serve multiple functions. An unused den took on new life as a functional study/media/presentation room.



OBJECTIVES

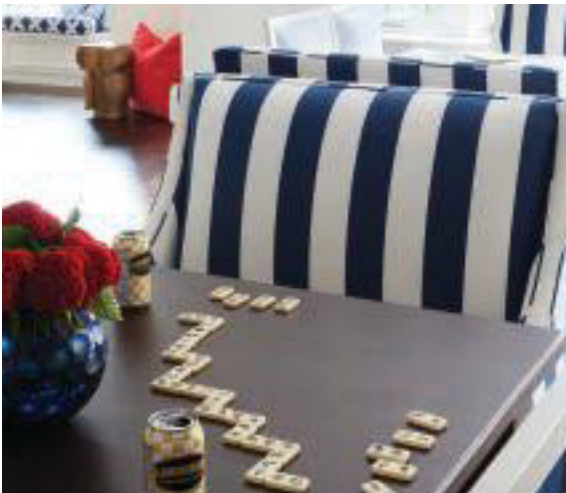
Flexibility, functionality, and durability were top priorities for the project. Extensive seating capacity with new seating options were a necessity as the rooms are used for various events including rush week, chapter meetings and group presentations.



AESTHETIC

The former uber-traditional style and inefficient design layout was transformed into a beautiful balance between professional and laidback with a cheerful appeal and tech-savvy finishes. Fun yet versatile pieces like gold and marble puzzle piece tables can be grouped together or pulled apart and moved around; plus, they are no-stain tops. Three carved wood owl accent tables can double as seating and ottomans. Bonus points for referencing the owl on the KKG crest.





SOLUTIONS

The design boasts two Kravet Furniture Clemson sectionals in a light gray fabric from the Kravet Smart Essential Textures collection (31682-1100), perfect for high-traffic areas due to its extreme durability. Each four-piece sectional includes a chaise, totaling 20 seats that can be easily pulled apart. The tables were surrounded with 12 Kravet Furniture Mercer side chairs in a chic white Kravet Contract Ultra Leather Plus for easy cleaning and durability (GATO-1) and four Kravet Furniture Duet banquettes in a mix of complementary fabrics. Overhead lighting, plenty of task lighting, and numerous floor outlets with USB connections were added for optional tech devices.



Kravet Smart • 31682-1100



Kravet Contract • GATO-1



ABOUT SWEET PEAS DESIGN

Sweet Peas Design is an award-winning, full-service design studio serving residential clients in the North Shore, Chicago and beyond. Established in 2003, they are known for depth of experience and LivableLuxe style – a signature look that is relaxed, elegant, comfortable and refined.



For more information, visit sweetpeas-inspired.com.



ELLE DECOR
The French Issue

To mark the 30th anniversary of the original French edition of ELLE DECORATION, the editors of ELLE DECOR will create a special September issue devoted to the best of French style, craftsmanship, creativity and joie de vivre. It will be an enticing and irresistible valentine to all things French—both classic and contemporary.

Ad close June 15, 2017. On sale August 1, 2017.

ADVERTISING OPPORTUNITIES

For information about advertising in **inspired.news**, please contact Gail Scott at gail4kravet@aol.com or call 347.837.3569

Brunschwig & Fils

New York

Paris

London